

TEAM RETREATS

AUDREY'S
FARMHOUSE





THE GREENHOUSES

THE BARN

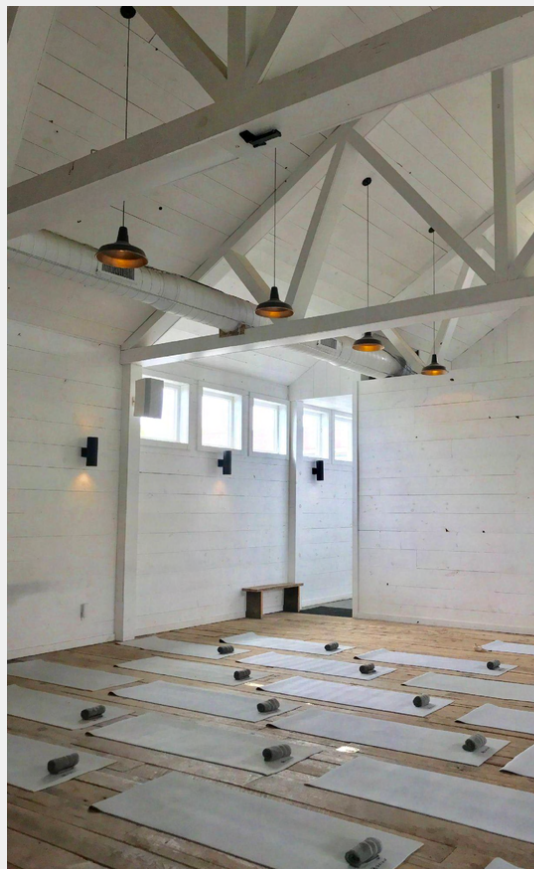
The fully insulated, temperature controlled, 2000-square-foot Barn features a beautiful mix of old and new, with white walls and beams, lofty ceiling, modern dimmable lighting and reclaimed barnwood floors.

This space can be configured in multiple ways to accommodate your presentations, meetings, work sessions or yoga sessions.

Equipped with a projector, mic/audio, meeting tables, lounge and a wood burning fireplace.

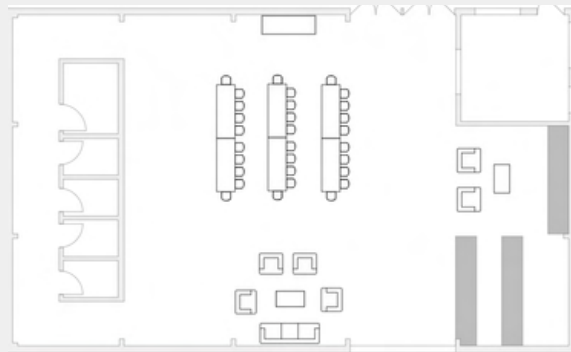


THE BARN

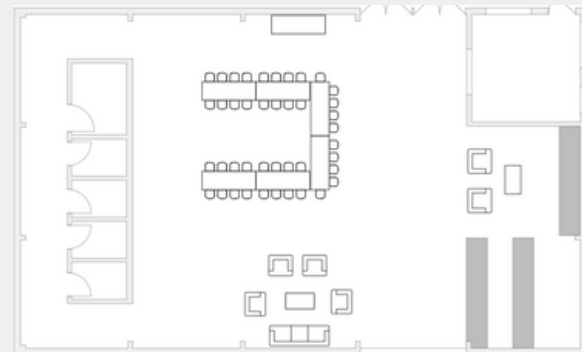


THE BARN

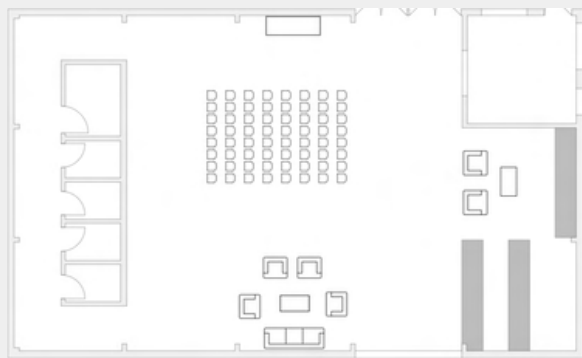
Configure the Barn to your specific group needs and the purpose of your retreat. Classroom, U-Shape, Theater Style, Circle and Boardroom are all available, equipment with two lounge sets for break sessions.



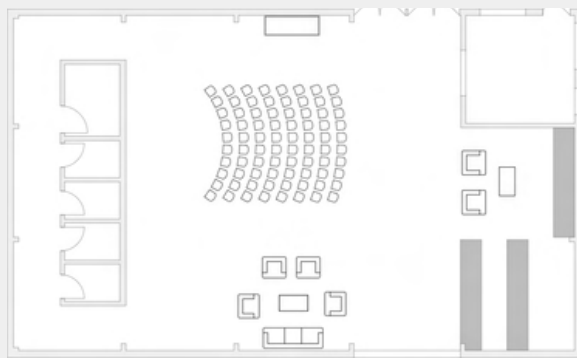
Classroom



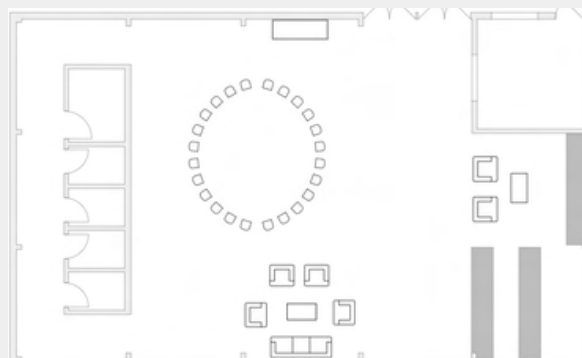
U-Shape



Theater



Curved Theater



Circle

THE GREENHOUSE

Our 3000-square-foot greenhouse is temperature controlled and includes hundreds of carefully maintained potted plants, hanging ivy and trees styled to envelope your guests throughout your retreat. The greenhouse is adjacent to The Barn and opens up with the use of barn sliders.

A great space for enjoying team meals, yoga or wellness sessions, workshops or meetings.

This light and airy space can be converted into 2 sections to allow for breakout groups or sessions with use of a curtain divider.



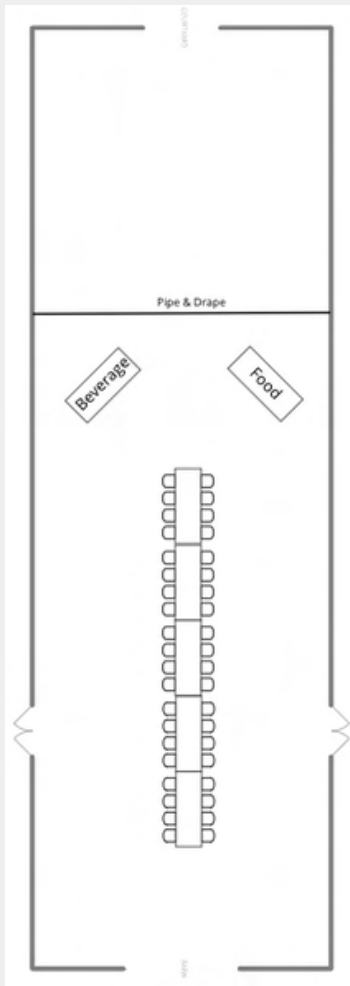
THE GREENHOUSE



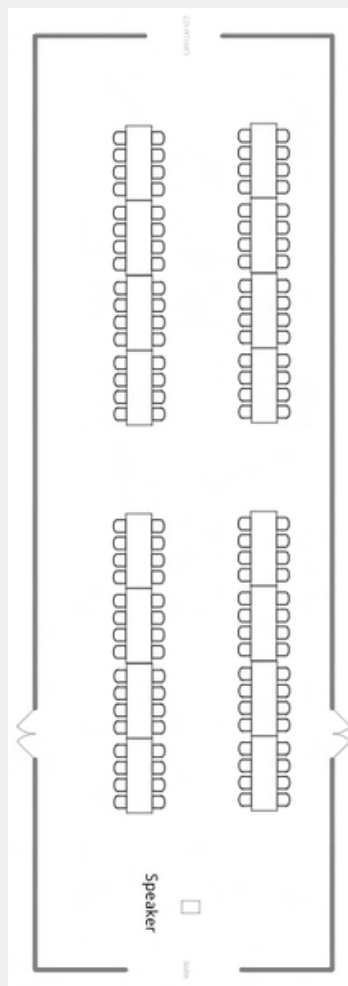
THE GREENHOUSE

Whether you are having meals, leading a workshop, or giving a presentation, there are a number of ways to configure the Greenhouse for your sessions.

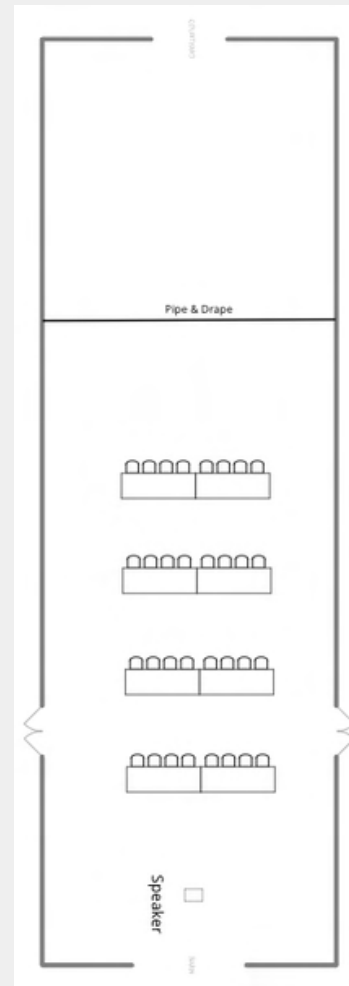
Concerned the Greenhouse is too big of a space for your group? We can easily divide the room with pipe and drape (curtain) to make the room suit your needs.



Sample Meal Set-Up



Workshop



Presentation

THE FARMHOUSE

For smaller break out groups in a more intimate setting, The Farmhouse c. 1740 living area can accommodate up to 10 of your team members.



LODGING

Greenhouse Room Types: 14 rooms total,

5 - Standard Queens

2 - Standard Queen Adjoining 6 - Junior Kings

1 - Deluxe King Suite

The Farmhouse c 1740: 5 rooms total

Pink - 1 queen bed (shares a bath with Charcoal)

Charcoal - 1 queen bed (shares a bath with Pink)

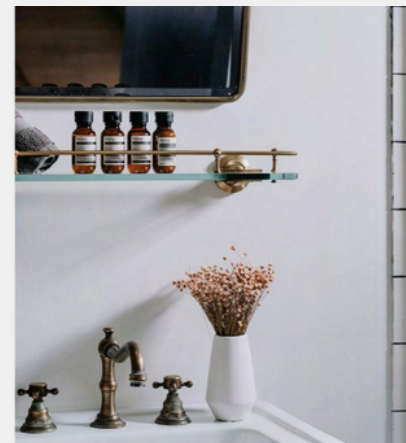
Cathedral - 1 queen bed, en suite

Woodstove - 1 king bed, en suite

The Suite - 1 queen, en suite w/ clawfoot tub (ground floor level)

Between The Greenhouses and Farmhouse rooms, we can sleep up to 19 guests onsite, assuming (1) guest per bed.

Additional lodging is available at our sister property, Old Mill, located 15 minutes away. Ask us about more information!



ON-SITE ACTIVITIES

Want to add in a little bit of on-site fun? We've got you covered!

Nightly s'mores, bonfires, projected movies in the barn, board games, books, hammock lounging and lawn games available for you.

For an additional fee, we can also add a fun vintage outdoor games day to your retreat or daily yoga classes in The Greenhouse.



ONSITE
CATERED
MEALS



BREAKFAST

included in the guest room rate

SAMPLE MENU

Fresh Baked Goods

House-made Yogurt Parfait

Oatmeal w/ Toppings

Hearty & Healthy Egg Bites

Fresh Fruit

Orange Juice, Apple Juice

Coffee & Tea



20% service fee + 8% sales tax applied to all food & beverage items

LUNCHES

pricing starts at \$55pp buffet style service

OPTION 1

Sandwich selection on rustic bread (chicken, beef, and ham)

Vegetable Quinoa & Greens Salad

Sodas, Ginger Beer, Coffee/Tea

OPTION 2

Build your own Salad/Grain bowls (chicken & beef)

Rustic bread tartines

Sodas, Ginger Beer, Coffee/Tea

OPTION 3

BLT Sliders

French Fries

Mixed Greens Salad

Sodas, Ginger Beer, Coffee/Tea

20% service fee + 8% sales tax applied to all food & beverage items





CASUAL DINNERS

pricing starts at \$95pp buffet style service

OPTION 1

shredded chicken tacos, beef tacos, vegetarian tacos

rice + beans

grilled street corn

mixed greens salad

churros + berry season compote + fresh whipped cream

includes beer & wine

OPTION 2

shredded chicken sliders, pulled pork sliders, vegetarian sliders

homemade mac + cheese

jalapeno cornbread

mixed greens salad

seasonal cobbler + fresh whipped cream

includes beer & wine

20% service fee + 8% sales tax applied to all food & beverage items

FORMAL DINNER

pricing starts at \$125pp

Served family style, your evening includes a pre-dinner cocktail hour with a grazing station, a 3 course meal, wine service, beer, wine, a specialty cocktail and non-alcoholic refreshments.

Menu options provided on the following page



20% service fee + 8% sales tax applied to all food & beverage items

FORMAL DINNER MENU

pricing starts at \$125pp family style service

includes beer, wine, pre-batched cocktail and soft beverages

SALAD

choose one

Kale Salad

with mandarin zest, caramelized onions,
& crispy chickpeas

Roasted Beet & Chevre Salad

with mandarin orange & pickled red
onion

Arugula Salad w/ Season Fruit

Mixed Greens Salad

with heirloom tomatoes & apple cider

ENTREES

choose two

Grilled Marinated Flank Steak

with chimichurri sauce

Hickory Smoked Bone-In Short Rib

with red wine gravy

Applewood Smoked Brisket

with apple cider jus

Pan Seared Chicken Breast

with creamy tarragon leek sauce

Roasted Chicken

quartered, bone-in, with herb jus

Pan Seared Norwegian Salmon

with white wine mustard sauce

SIDES

choose two

Heirloom Potatoes w/ Rosemary & Thyme

Au Gratin Potatoes

Mashed Potatoes

Butternut Squash w/ Roasted Grapes

Haricot Verts w/ Hazelnut Butter

Couscous & Mixed Vegetables

Roasted Glazed Carrots w/ Tarragon

Spinach & Summer Vegetable Sautee

20% service fee + 8% sales tax applied to all food & beverage items

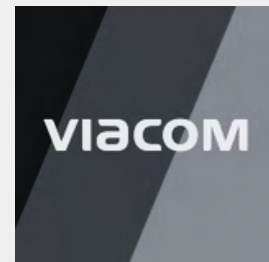


ADDITIONAL SERVICES

Located at the base of the Shawangunk Ridge in the Hudson Valley, there is so much to see, do and explore in the area. We can't wait to show you!

Ask us about:

- Yoga Sessions On-Site
- Guided Hiking
- Photo Excursions
- Minnewaska State Park
- Mohonk Preserve
- Horseback Riding
- Whiskey Distillery Tours
- Farm Tours
- Winery Tours
- Cidery Tours
- Rock Climbing
- Snow Shoeing
- Cross Country Skiing
- Bike Rentals
- Kayak Rentals
- Skeet Shooting



PRICING

LODGING

19* Guest Rooms start at \$300 per night, per room
(includes breakfast each morning, daily snacks)

*2 nights of lodging at The Greenhouses property is required.

(Additional 19 guest room accommodations at our sister property Old Mill, 15 minutes away - subject to availability)

MEALS

Lunch starts at \$55pp + tax + 20% service
Casual Dinner starts at \$95pp + tax + 20% service
Formal Dinner starts at \$125pp + tax + 20% service

VENUE FEES

Venue Fee waived if all on-site guest rooms are bought out and food & beverage minimum has been met

Contact us for special pricing / offers and 1 night lodging stays during our January - April months

Email us at inquiries@audreysfarmhouse.com for additional terms and a quote for your desired dates today!

**We look forward to hosting your
team at The Greenhouses.**

**Email us at
inquiries@audreysfarmhouse.com
with questions.**



